

## Installation Instructions for VC/VH-PIU20 Series Consoles

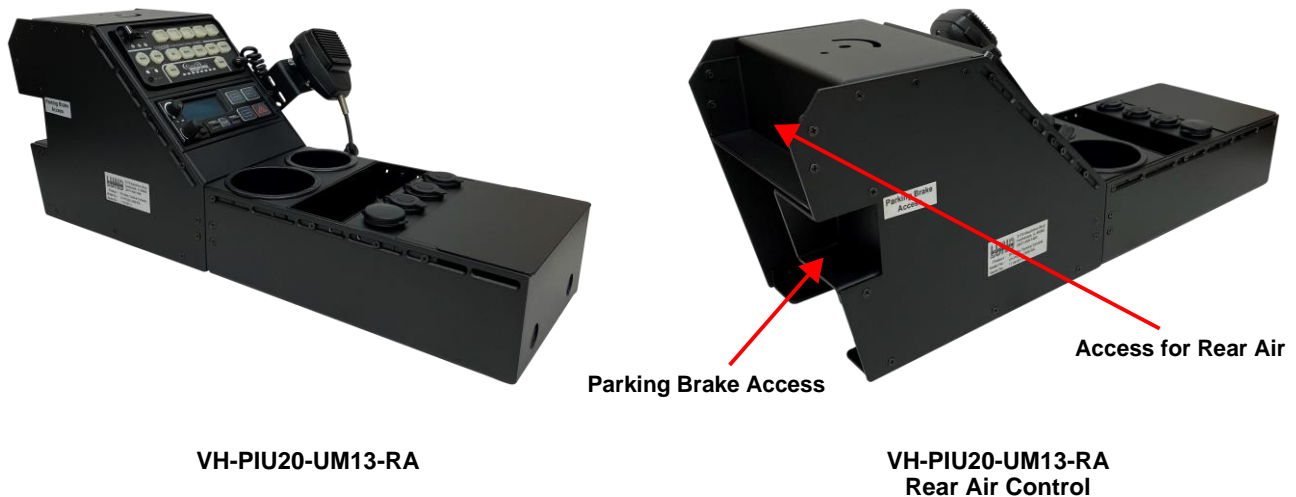


Lund's VC/VH-PIU20 Series Consoles are made of powder coated aluminum for long life, light weight, and structural rigidity. These consoles are designed to fit between the bucket seats of the 2020 Ford Police Interceptor Utility and mount directly to Ford's OEM Base Plate.

Both consoles allow equipment to be mounted in almost any order. The installer and/or user is encouraged to try different equipment layouts before installing the console in the vehicle.

### **CAUTION:**

Extreme care must be taken to ensure that equipment is not mounted in the air bag deployment zone as defined by the vehicle manufacturer.

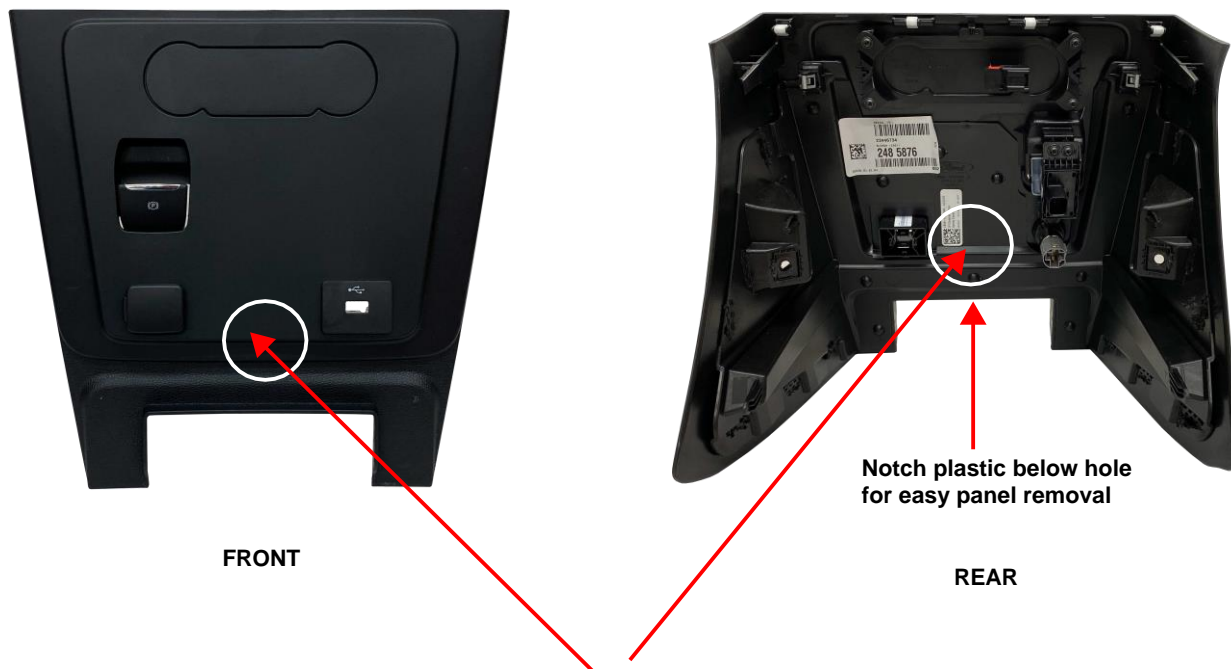


- Unpack the console from its box, carefully checking for brackets in the packing material.
- Set console on OEM base plate and position tight up to the dash board. Next determine where you are going to run wiring to console. Recommendations: **1)** Removing lower dash panel and drilling a hole large enough to accommodate the amount of wiring you have as shown below. **2)** Drill a hole in the front of the OEM Baseplate. **3)** Drill a hole in the back of the console to line up with the existing hole on the base plate.
- After you have drilled an access point for wiring, secure the console to base plate by using supplied  $\frac{3}{4}$ " sheet metal screws and washers. Make sure to screw into the four corners of console mounting slots as wide apart as possible.

### CAUTION:

Be sure not to drill or screw into anything (wires, lines, etc.) under Ford OEM baseplate when mounting the console. Be sure that all wiring is protected from sharp edges by using flex guard, wire loom or a similar material.

- Attach mounting brackets to your equipment (ex. Two-Way Radios, Sirens, Etc.) then determine the location of equipment to be mounted in the console.
- Wire your equipment then mount into console using supplied 8/32 flat head screws.
- **Be sure to leave room for wires and antenna cables at the bottom of the console.**
- **Remember to leave enough slack in cables and wires to allow service removal from the top side.**



**IMPORTANT NOTICE:** Lund Industries, Inc. has no control of the configuration or dimensions of equipment installed, nor the configuration of vehicles or their air bag deployment zones. Likewise, we have no control over the installation of the Consoles and Mounting Systems. Users are urged to check all installations against the vehicle manufacturer's definition of their airbag deployment zone. Lund Industries, Inc. assumes no liability for non-compliant installations.

If any problems or questions are encountered in the installation of equipment please contact Lund at (800) 504-1460 for assistance.