



---

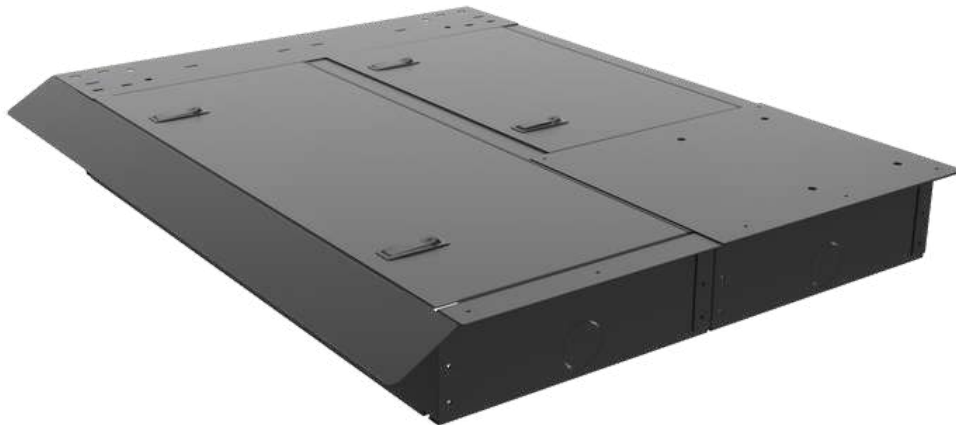
---

3175 MacARTHUR BLVD. • NORTHBROOK, IL • 60062  
847-459-1460 • FAX 847-714-9443  
www.lund-industries.com  
www.data-carts.com

---

---

## 2021+ Chevy Tahoe PPV SubFloor Install Guide P/N SF-21TAH-\*\*



### **Important:** If installing a rear cargo partition or prisoner seat

- SubFloor must be installed before rear cargo partition and or prisoner seat.
- Rear cargo barrier and/or prisoner seat floor brackets should be installed before SubFloor
- Lund recommends having all wiring finalized behind cargo area panels before installing SubFloor



### **Always!**

- Read all instructions before installing any Lund products.
- Check for obstructions (Wires, brake lines, fuel tank, etc.) before drilling any holes!
  - Use hardware provided with install kit

- First attach the SubFloor drivers side wing (**A**) with supplied (8) Flat Head Screws.
- Remove the vehicles rear hatch lower trim piece.
- Determine where the (3) 3rd row OEM seat bolt locations are and remove the carpet or rubber matting covering the mounting locations. slide the SubFloor unit through rear hatch of vehicle until the front of subfloor reaches those OEM mounting points as shown in **(Fig. 1)**
- Next loosely attach the (3) frame mount brackets (**B**) to the SubFloor using provided bolts and washers then hand tighten those brackets to the floor OEM mounting points using the (3) M10 Hex Head Bolts shown in **(Fig.2)** now get the floor level then proceed to tighten those 6 bolts securely.
- Now attach the (2) "L" Brackets (**C**) to the rear of the SubFloor using the provided 5/16"bolts, nuts and washers. The brackets should align with the vehicle's frame rails as shown in **(Fig.3)** then screw down brackets using supplied sms screws. **(Fig.4)** *\*\*Be sure to check the area being screwed into is clear of any objects.*
- Lastly reinstall the vehicles trim panel removed earlier and install the SubFloor's Ramp Trim Panel (**D**) using provided (4) 10/32 Bolts located inside the SubFloor compartment.

**(i)** Section (**E**) Below in the diagram is a removable plate for added storage

