



Tahoe SubFloor System

Lund's all new Sub Floor Cargo Storage System expand's your 2021+ Chevy Tahoe's rear storage area allowing you to securely stow equipment, radios, weapons and more.

The SF-21TAH creates a slightly raised level floor in the cargo area allowing "Sub Floor" storage including two hinged locking compartments.

The rear compartment can be used for weapon and equipment storage while the front compartment is ideal for radio's or additional gear storage.

The SF System is designed to work with or without a rear cargo partition and securely mounts to OEM mounting points. Optional accessories available.



LUND
INDUSTRIES
LUND

Part Numbers / Descriptions



SF-21TAH-CS *Complete SubFloor System*

Includes: Floor with one large 42x17x6 locking compartment & one smaller 29x17x6 locking compartment / HD bulkhead / Fold Down locking Electronics Box

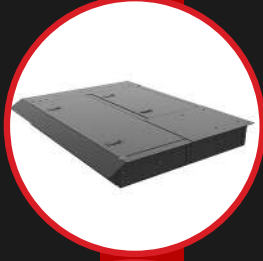
\$2,050.00



SF-21TAH-S2 *SubFloor System 2*

Includes: SubFloor with one large 42x17x6 locking compartment & one smaller 29x17x6 locking compartment with full size HD bulk head. *****Does not include SF-21TAH-FDEB Box**

\$1,450.00



SF-21TAH-UC *SubFloor Under Cover System*

Includes: SubFloor with one large 42x17x6 locking compartment and one smaller 29x17x6 locking compartment - ideal for use in UC, or admin vehicles.

\$1,325.00



SF-21TAH-FDEB *Fold Down Electronics Box*

Optional Locking 27x15x6 fold down electronics box utilizing a 23x12 removable tray for ease of equipment installation. The fold down design allows easy access for service in the down position while protecting electronic equipment when closed. ****Not Compatible with SF-21TAH-BU**

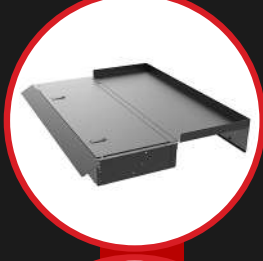
\$650.00



SF-21TAH-FBH *Front Heavy Duty Bulkhead*

Optional Bulkhead for SubFloor system: attaches to front and sides of SubFloor and helps to contain gear and equipment. ****Not Compatible with SF-21TAH-BU**

\$250.00



SF-21TAH-BU *Basic Unit*

This Base Unit is a more cost effective way of creating a simple flat floor with limited storage. Includes one locking 42x17x6 storage compartment and a simple flat floor panel towards the front ideal for mounting storage boxes. ****Not compatible with SF-21TAH-FBH or SF-21TAH-FDEB**

\$975.00



Distributed by: