



THE LOFT

STORAGE AND EQUIPMENT COMPARTMENT

US PATENT No. 10,105,998

Installation Instructions

21+ Chevy Suburban

LOFT-21SUB-3R-GV/SG



LOFT-21SUB-GV Shown above

LOFT-21SUB is designed to be installed with 3rd row seat.



Always!

- Read all instructions before installing any Lund products.
- Check for obstructions (Wires, brake lines, fuel tank, etc.) before drilling any holes!
 - Use hardware provided with install kit

Lund Industries, Inc.

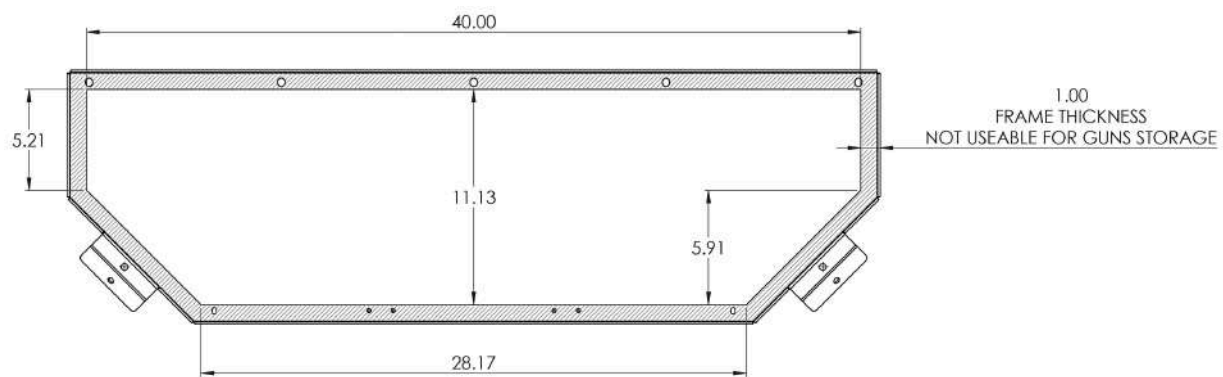
847.459.1460 | 3175 MacArthur Blvd | Northbrook, IL 60062 | sales@lund-industries.com | www.lund-industries.com

Parts & Mounting Hardware:

Quantity	Part Number	Description
1	LI-SUB-BH	Front Bulkhead
1	LI-TAH-RBH	Rear Bulkhead
2	LI-TAH-LOFT-3	Mounting Brackets
1	LI-SUB-LOFT-1D	Crossbar Assembly Drivers Side
1	LI-SUB-LOFT-1P	Crossbar Assembly Passenger Side
1	LI-SUB-LOFT-2D	Drivers Side Rear Hatch Mount Bracket
1	LI-TAH21-LOFT-RB-P	Passenger Side Rear Hatch Mount Bracket

It is recommended to pre-install gun lock bracket and muzzle or butt cup depending on model LOFT purchased to the LOFT tray. Also add gun lock pre-wiring (timer/momentary switch).

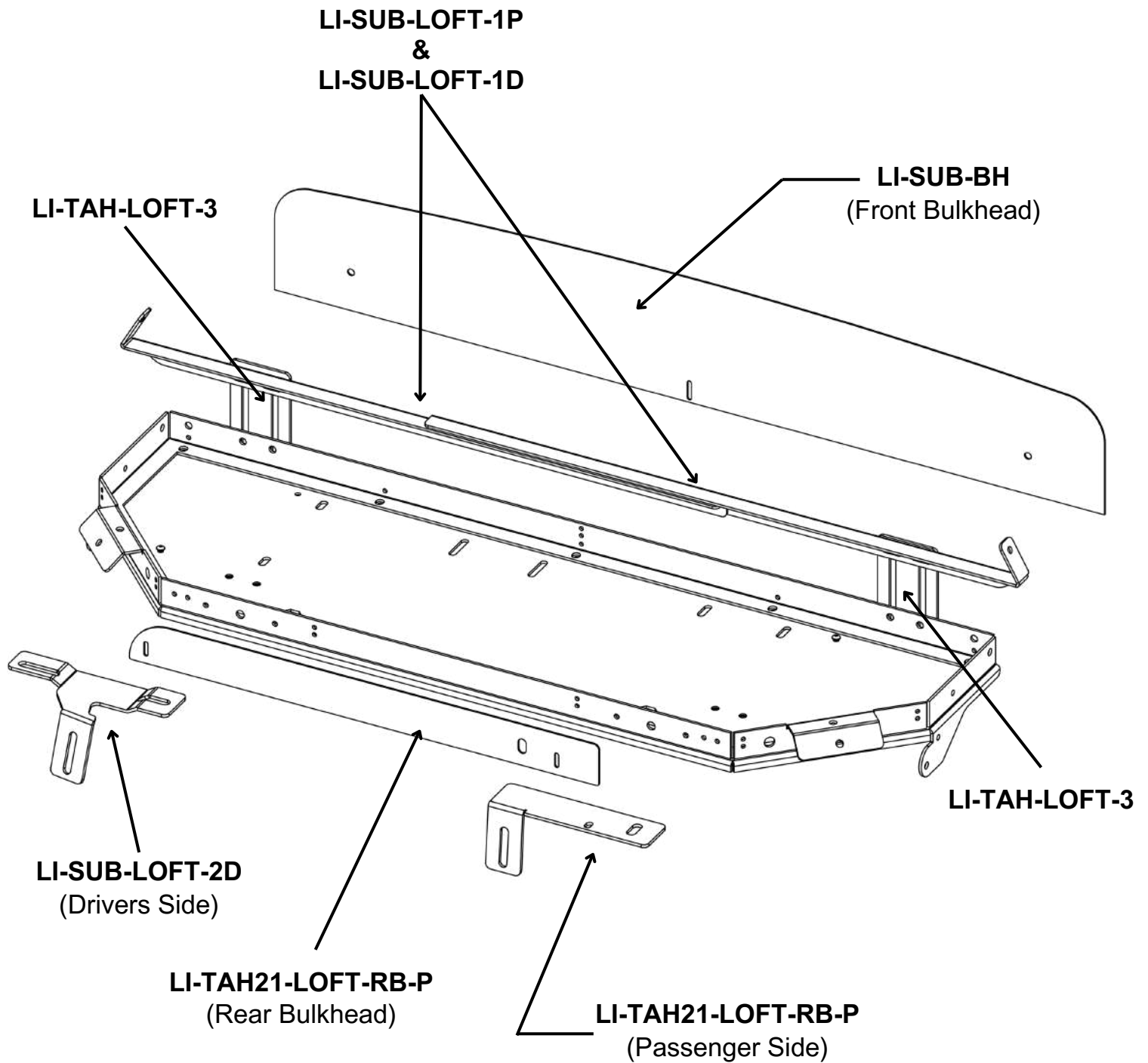
Timer, 12v power and momentary switch location is determined by end user.



Lund Industries, Inc.

847.459.1460 | 3175 MacArthur Blvd | Northbrook, IL 60062 | sales@lund-industries.com | www.lund-industries.com

PART'S ASSEMBLY



Lund Industries, Inc.

847.459.1460 | 3175 MacArthur Blvd | Northbrook, IL 60062 | sales@lund-industries.com | www.lund-industries.com

Installations Steps:

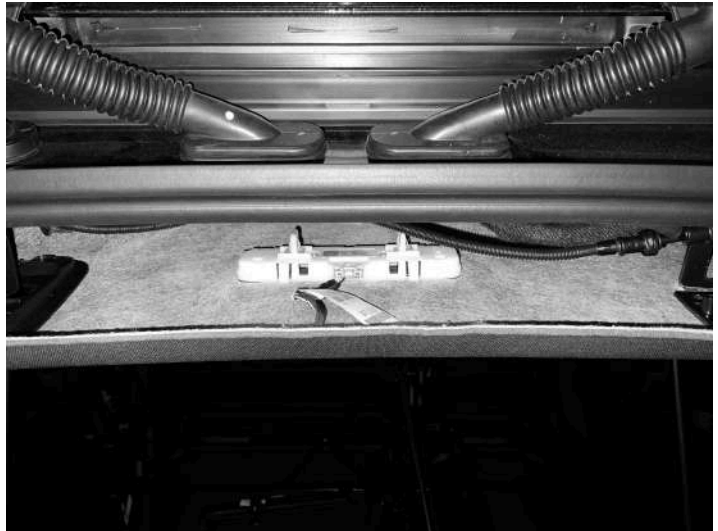
1

Remove (2) "D" pillar trim panels on each side of the vehicle and seatbelt plastic trim by side windows.



2

Release roof liner clips and (2) clips on dome light headliner to partially drop rear end of headliner.



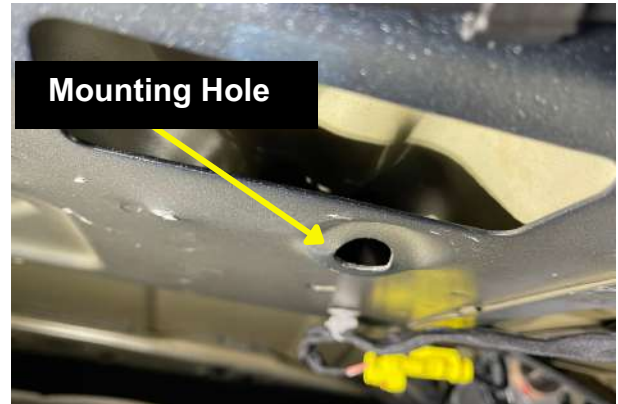
3

Attach drivers side seatbelt bracket to factory pems using factory bolts located on each side of the retractable assembly trim piece. Leave bolts loose for adjustment.



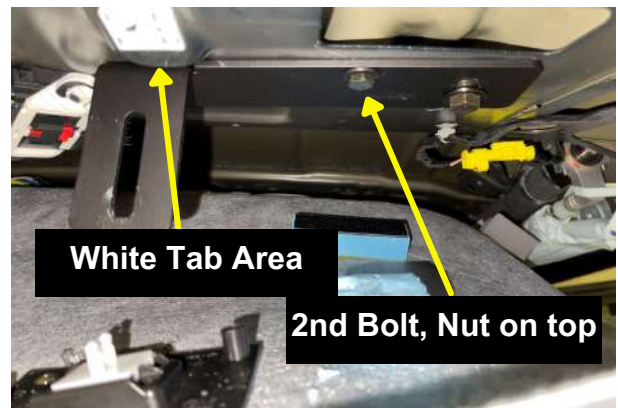
4

Next install the passenger side bracket. Find the factory hole as shown and use 3/8" Bolts, nuts and washers.



5

Position bracket against white mount tab. Drill 5/16" hole thru the frame of the car using the second mounting hole in bracket and attach second 1/4-20 bolt, nut and washer in passenger side bracket. Tighten bolts securely.



6

Adjust the drivers side bracket so the slots in the brackets measure 20.75" apart. Tighten bolts.



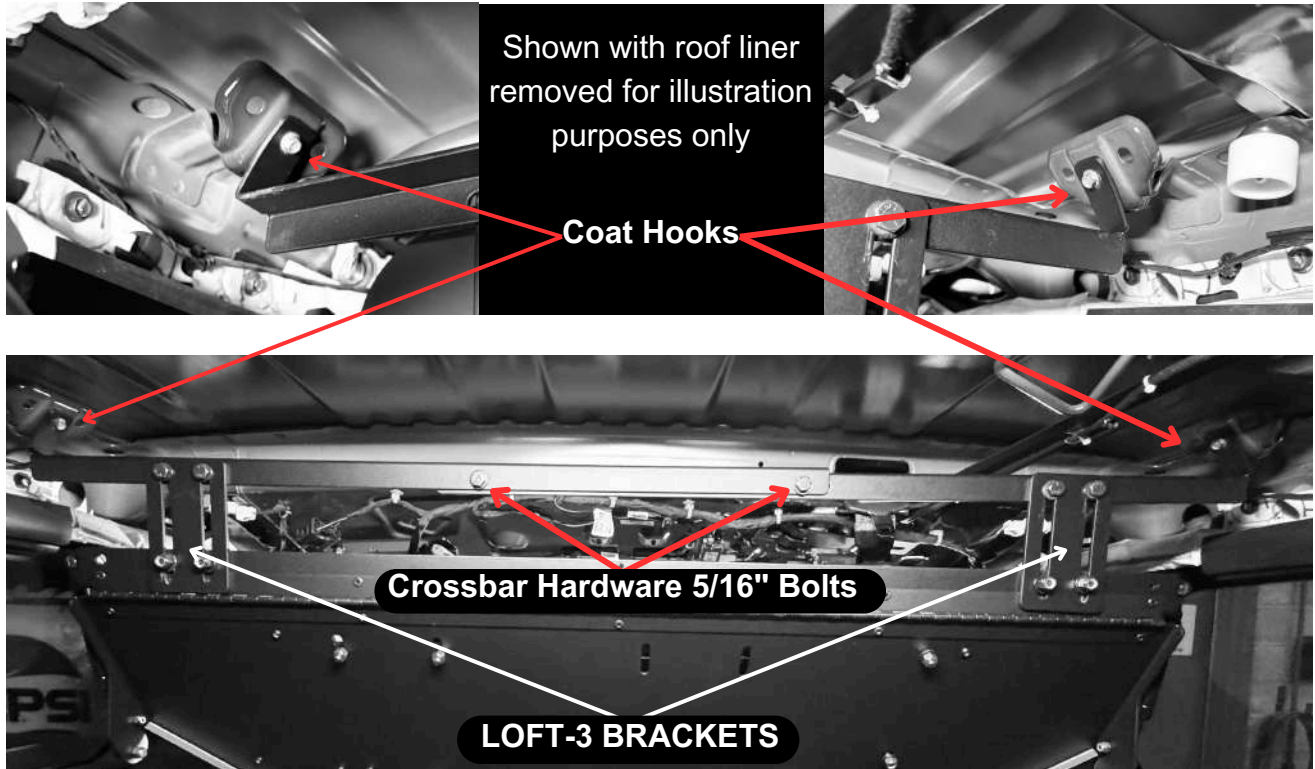
7

Cut a slit in the roof liner so mounting tab sticks through on both driver and passenger sides. Reattach roof liner & trim.



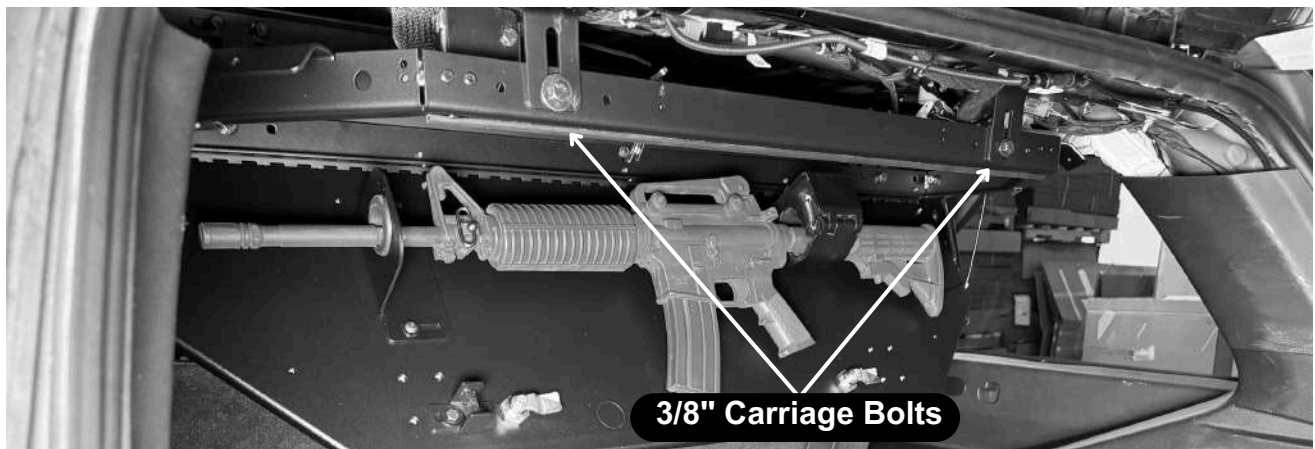
8

Remove coat hooks on drivers and passenger side and install DS/PS Side crossbar to factory coat hooks. (As shown below) Bolt the 2 Crossbar pieces together using 5/16" hardware. Attach LOFT-3 bracket to cross bar and leave loose until end.



9

This step is best done with two people. Position the LOFT frame and secure it with 5/16" bolts, nuts, and washers to the front LOFT-3 brackets, and then with 3/8" carriage bolts, nuts, washers to the rear hatch brackets as shown below. Make sure to push it up as close to the roof as possible while leaving enough room for the mounted weapon. Once the frame is aligned and level, tighten all hardware.



10

Once all hardware on the mounting brackets and LOFT frame is fully tightened, double-check the level both side-to-side and front-to-back, making any necessary adjustments. Wiring can now be finalized.

11

Install front bulkhead using 5/16" hardware and spacers. (Shown Below)



Using the LOFT

- (2) wing latches are used to secure the LOFT tray in the closed position. They are key lockable for added security. Open tray by turning wing latches.
- Gun Locks are electronic with key override. Position gun into lock and muzzle bracket and close lock tightly. Check to ensure gun is secure. If gun lock sticks when trying to open, push on gun door to relieve pressure on the locking mechanism.

Caution: Be sure to comply with all gun safety rules when storing a firearm. Never store a firearm with a round in the chamber.

Lund Industries, Inc.

847.459.1460 | 3175 MacArthur Blvd | Northbrook, IL 60062 | sales@lund-industries.com | www.lund-industries.com